

MIDAYS MILEAGE



DOMESTIC DESIGNS - 2010

Precured Treads

Made from high mileage compounds, our treads have been accepted the world over and tested on all road conditions.



Black Vulcanising Solution

Available as Thicker and Ready to use solution. Compatible with both precured and hot process.



Bonding Gum

Available for 99°C, 125°C and 150°C operations. Our gum is made from 100% natural rubber to increase tack. Available in customer specified sizes also. Different types of Gum are available for both Precured and Hot process. Can be used to fill nail holes and repair injured parts of casing.



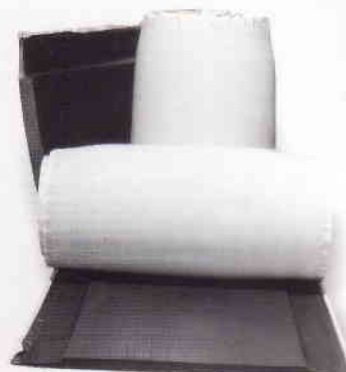
Cushion
Repair Compound
(Hot process)
For industrial and
agricultural use also.



midas
MILEAGE

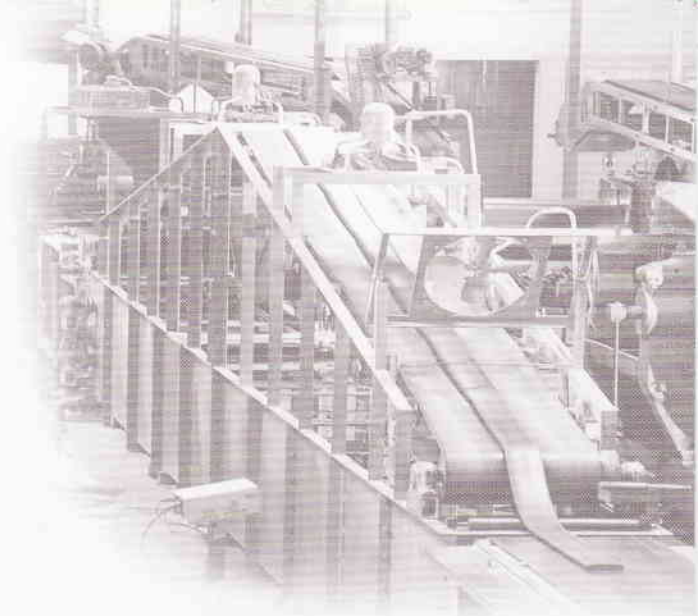
Camel Back & Orbi Tread

Increased scorch safety to maximise shelf life. Different compounds available for different uses including (Truck, Tractor and OTR). Available in customer specified sizes.



Curing bags

Butyl curing bags specially designed to maximise cures.



Curing Envelopes

Heat resistant envelopes for ease of use and long life.



BIAS

AJAX



Name	Length inch	Base width mm	Tread depth mm	Base thickness	Approx. weight kgs
11.00x20	136	215	13.5	3.6	12.600
10.00x20	127	215	13.5	3.6	11.800
" Super	127	210	16.5	4.0	13.600
"	127	208	13.5	3.6	11.600
" Super	127	205	13.0	4.0	11.400
"	127	205	12.0	3.5	10.200
"	127	196	15.0	3.5	11.800
9.00x20 L.W.	124	194	12.0	3.0	9.600
"	124	190	14.5	3.5	11.000
" Super	124	187	17.5	4.0	12.600
"	124	187	14.0	3.5	10.500
" Bus	124	186	14.5	2.5	10.000
" L.W.	124	186	11.0	3.0	8.600
8.25x20	118	168	13.5	3.5	8.800
"	116	165	12.5	3.0	7.900
8.25x16	103	168	13.5	3.5	7.700
"	103	165	12.5	3.0	7.000
7.50x16	99	156	13.0	3.5	6.500
" L.W.	99	156	11.0	3.0	5.500
"	99	150	11.0	3.2	5.400
" L.W.	99	150	10.0	3.0	5.000
7.8x15	87	156	13.0	3.5	5.700
7.00x15	93	140	11.5	3.0	5.000
6.00x16	90	130	13.0	2.5	4.500
"	90	125	11.0	3.0	4.000
"	90	120	11.0	3.0	3.900

ARIUS



Name	Length inch	Base width mm	Tread depth mm	Base thickness	Approx. weight kgs
12.00x20/24	147	220	14.5	3.5	14.900
"	147	215	14.5	3.5	15.000
"	147	210	14.5	3.5	14.300
11.00x20	136	220	14.5	3.5	13.800
"	136	215	14.5	3.5	13.900
10.00x20	127	215	14.5	3.5	13.000
"	127	210	14.5	3.5	12.400
" Super	127	208	18.0	4.0	15.000
"	127	208	14.5	3.5	12.300
9.00x20	124	190	17.0	4.0	12.900

AUTO



Name	Length inch	Base width mm	Tread depth mm	Base thickness	Approx. weight kgs
Mid Auto	50	84	8.0	2.6	1.100

CAR M



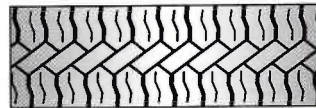
Name	Length inch	Base width mm	Tread depth mm	Base thickness	Approx. weight kgs
Ambassador	82	118	11.0	3.0	3.500
" Taxi	82	114	12.0	3.0	3.500
"	82	114	9.7	2.6	3.000
"	82	107	12.0	3.0	3.300
Fiat	76	107	12.0	3.0	3.100
"	76	95	8.5	2.5	2.000
"	76	91	8.0	2.0	1.700
Maruti	66	107	12.0	3.0	2.700
"	66	102	10.0	2.0	2.100
"	66	95	8.5	2.5	1.700
"	66	91	8.0	2.0	1.500
4.50x10	60	102	10.0	2.0	1.900
"	60	95	8.5	2.5	1.600

CROSS-LUG



Name	Length inch	Base width mm	Tread depth mm	Base thickness	Approx. weight kgs
10.00x20	128	210	14.0	4.0	12.400
"	127	205	14.0	3.5	11.000
"	127	197	15.0	4.0	11.500
9.00x20	124	190	14.0	3.5	10.500
"	125	187	15.0	4.0	11.200
7.50x16	99	160	12.0	3.6	6.300

CROSS-COUNTRY



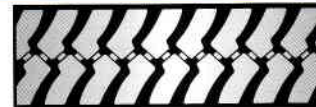
Name	Length inch	Base width mm	Tread depth mm	Base thickness	Approx. weight kgs
12.00X20/24	147	215	15.0	3.5	14.000
11.00X20	136	215	15.0	3.5	13.000
10.00x20	127	215	15.0	3.5	12.100
"	127	210	15.0	3.5	11.900
" Super	130	205	14.5	4.0	11.700
"	127	205	13.5	3.6	10.500

DB TREAD



Name	Length inch	Base width mm	Tread depth mm	Total thickness	Approx. weight kgs
10.00 x 20	128	205	22.0	22.0	16.700

ID MINES



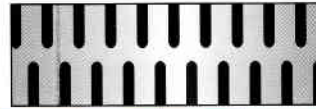
Name	Length inch	Base width mm	Tread depth mm	Base thickness	Approx. weight kgs
10.00x20	128	205	16.0	4.0	11.800

JEEP



Name	Length inch	Base width mm	Tread depth mm	Base thickness	Approx. weight kgs
6.00x16	90	132	11.0	3.5	4.100
"	90	123	12.0	3.0	3.900

JEEP-LUG



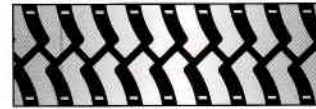
Name	Length inch	Base width mm	Tread depth mm	Base thickness	Approx. weight kgs
6.00x16	90	124	11.5	3.0	3.500

L-01



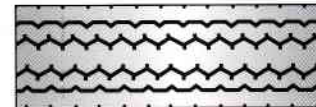
Name	Length inch	Base width mm	Tread depth mm	Base thickness	Approx. weight kgs
10.00x20	127	215	14.0	4.0	12.100
"	127	205	14.0	4.0	11.100

LOG LUGGER



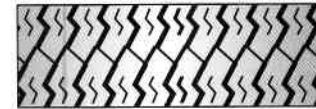
Name	Length inch	Base width mm	Tread depth mm	Base thickness	Approx. weight kgs
12.00X20/24	147	240	21.0	4.0	20.000
"	147	220	17.0	4.0	15.200
"	147	210	15.0	4.0	13.300
10.00X20	127	210	15.0	4.0	11.500

LONG HAUL



Name	Length inch	Base width mm	Tread depth mm	Base thickness	Approx. weight kgs
9.00x20 Super	124	185	18.0	4.0	12.900
"	124	185	14.5	3.5	10.700

LUG MASTER



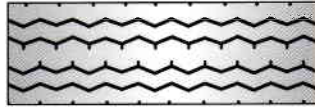
Name	Length inch	Base width mm	Tread depth mm	Base thickness	Approx. weight kgs
10.00x20	127	210	17.0	4.0	14.400
"	127	208	13.5	3.5	11.300
"	127	207	16.0	4.0	13.600
"	127	205	14.0	4.0	11.400
9.00x20	124	190	17.0	4.0	12.500
7.50x16	99	160	12.5	3.5	6.400
" L.W. (*KL)	99	160	12.0	3.0	6.100

LZT



Name	Length inch	Base width mm	Tread depth mm	Base thickness	Approx. weight kgs
10.00X20	127	210	15.0	3.5	12.400
..	128	205	16.0	4.0	12.800

MERCURY



Name	Length inch	Base width mm	Tread depth mm	Base thickness	Approx. weight kgs
12.00x20/24	147	215	13.0	3.0	13.200
11.00x20	136	215	13.0	3.0	12.200
10.00x20	127	215	13.0	3.0	11.200
..	127	205	13.0	3.0	10.700
.. L.W.	127	205	11.0	3.0	9.300
9.00x20	124	194	13.5	3.5	10.500
..	124	190	16.0	4.0	11.800
..	124	187	13.5	3.5	10.200
7.50x16	99	160	11.0	3.5	5.900

MINES-SPECIAL



Name	Length inch	Base width mm	Tread depth mm	Base thickness	Approx. weight kgs
10.00x20	127	205	14.0	3.5	10.700
9.00x20 Super	124	190	15.0	3.5	10.600
..	124	190	14.0	3.5	10.000
8.25x20	118	168	13.5	3.5	8.200
8.25x16	103	168	13.5	3.5	7.200

MINES SUPER



Name	Length inch	Base width mm	Tread depth mm	Base thickness	Approx. weight kgs
12.00x20/24	147	240	15.0	4.0	17.200
..	147	225	15.0	4.0	15.600
..	147	220	15.0	4.0	15.000
..	147	215	16.0	4.0	15.000
11.00x20	136	220	15.0	4.0	13.900
..	136	215	16.0	4.0	13.900
10.00x20	127	215	16.0	4.0	12.900

MM



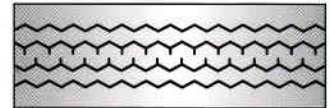
Name	Length inch	Base width mm	Tread depth mm	Base thickness	Approx. weight kgs
10.00x20	128	205	16.0	4.0	12.400

N.H.



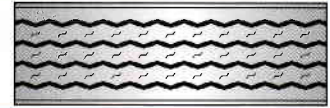
Name	Length inch	Base width mm	Tread depth mm	Base thickness	Approx. weight kgs
10.00x20	127	204	14.0	4.0	11.900

OLYMPUS



Name	Length inch	Base width mm	Tread depth mm	Base thickness	Approx. weight kgs
8.25x20	118	168	13.5	3.0	8.000
8.25x16	103	168	13.5	3.0	7.000

ORION



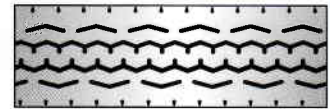
Name	Length inch	Base width mm	Tread depth mm	Base thickness	Approx. weight kgs
10.00X20	127	205	13.5	3.0	10.900
.. LW	127	205	11.5	2.5	9.300

PC-1



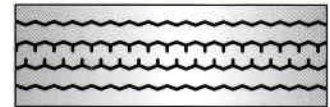
Name	Length inch	Base width mm	Tread depth mm	Base thickness	Approx. weight kgs
10.00 x 20	128	215	15.0	4.0	12.900

PORT MILER



Name	Length inch	Base width mm	Tread depth mm	Base thickness	Approx. weight kgs
10.00X20	129	205	16.0	4.0	13.700

REVVER



Name	Length inch	Base width mm	Tread depth mm	Base thickness	Approx. weight kgs
10.00X20	127	205	13.5	3.5	11.700
9.00X20	124	194	13.0	3.5	10.500

ROADSTER



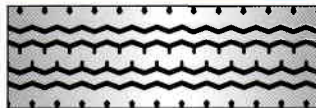
Name	Length inch	Base width mm	Tread depth mm	Base thickness	Approx. weight kgs
10.00x20	127	210	16.0	4.0	13.000
"	127	205	17.0	3.7	12.700
" L.W.	127	205	14.0	4.0	11.200
9.00x20	124	196	16.0	3.8	11.400
"	124	186	15.5	3.0	10.200
" L.W. (*KL)	124	186	13.5	3.0	9.100
7.50x16	99	160	12.0	3.0	5.900

SEMI-LUG



Name	Length inch	Base width mm	Tread depth mm	Base thickness	Approx. weight kgs
12.00x20/24	147	215	14.0	3.5	13.600
"	147	210	15.0	3.5	13.900
11.00x20	136	215	14.0	3.5	12.600
10.00x20	127	215	14.0	3.5	11.700
"	127	210	15.0	3.5	12.000
"	127	208	17.0	4.0	13.400
"	128	205	13.0	4.0	11.500
" L.W.	127	205	12.5	3.5	10.400
"	127	197	14.0	4.0	11.100
9.00x20	124	197	14.0	4.0	10.800
" Super	125	187	18.0	4.0	11.900
"	125	187	14.5	4.0	10.200
" M.W.	124	187	13.5	3.0	9.100
8.25x20	118	168	14.5	4.0	9.000
"	118	165	11.5	3.0	7.100
8.25x16	103	168	14.5	4.0	7.800
"	103	165	11.5	3.0	6.200
7.50x16	99	160	14.0	4.0	7.200
" L.W.	99	160	11.0	4.0	5.900
"	99	150	13.0	4.0	6.200
" L.W.	99	150	11.0	3.0	5.000
6.00x16	90	132	12.5	3.0	4.600
"	90	124	13.0	3.0	4.400

SONATA



Name	Length inch	Base width mm	Tread depth mm	Base thickness	Approx. weight kgs
10.00x20	127	205	12.0	3.0	9.700

SUPER VEE



Name	Length inch	Base width mm	Tread depth mm	Base thickness	Approx. weight kgs
10.00x20	127	190	13.5	3.5	10.000
9.00x20	124	190	13.5	3.5	9.800
"	124	186	13.5	3.5	9.600

TRACK MASTER



Name	Length inch	Base width mm	Tread depth mm	Base thickness	Approx. weight kgs
12.00x20/24	147	220	15.0	4.0	14.900
"	147	215	16.0	4.0	14.700
"	147	210	15.0	4.0	14.000
11.00x20	136	220	15.0	4.0	13.800
"	136	215	16.0	4.0	13.600
10.00x20	127	215	16.0	4.0	12.900
"	127	210	15.5	3.5	12.300
"	127	205	14.0	3.5	11.500
" M.W.	127	205	12.5	3.0	10.400
" L.W.	127	205	11.0	3.0	9.200
"	127	200	15.0	3.5	11.400
9.00x20	124	194	12.0	3.0	9.000
"	124	187	15.0	3.5	10.500
" M.W.	124	187	13.5	3.0	9.500
" L.W.	124	187	12.0	3.0	8.700
8.25x20	118	170	13.0	3.0	7.800
8.25x16	103	170	13.0	3.0	6.800
7.50x16	99	158	12.2	3.3	6.000
"	99	150	12.5	3.5	6.000
" L.W.	99	150	11.5	3.0	5.500

TRANSPORT



Name	Length inch	Base width mm	Tread depth mm	Base thickness	Approx. weight kgs
10.00x20	127	194	14.0	4.0	11.300
9.00x20	124	194	14.0	4.0	11.000
7.50x16 Super	99	148	13.1	3.7	6.400
7.50x16 M.W.	99	148	12.0	3.0	5.700
" L.W.	99	148	11.0	3.5	5.300
7.00x15 Super	93	148	13.1	3.7	6.000
7.00x15 M.W.	93	148	12.0	3.0	5.400
" L.W.	93	148	11.0	3.5	4.900

TRACTOR FRONT



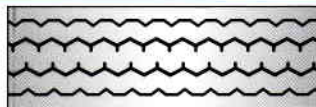
Name	Length inch	Base width mm	Tread depth mm	Base thickness	Approx. weight kgs
6.00x16	90	136	14.0	4.0	3.600
"	90	130	12.0	3.5	3.700

NEW TRACTOR FRONT



Name	Length inch	Base width mm	Tread depth mm	Base thickness	Approx. weight kgs
6.00x16	90	132	13.5	3.5	4.200
..	90	124	15.0	4.0	3.500

VIKING



Name	Length inch	Base width mm	Tread depth mm	Base thickness	Approx. weight kgs
10.00x20	127	210	15.0	4.0	13.200
.. Super	127	205	15.0	3.6	12.600
..	127	205	12.0	3.0	10.100
..	130	200	14.5	4.0	12.600
..	127	197	14.5	4.0	12.200
..	127	195	11.0	3.2	9.300
..	127	194	13.5	3.0	10.800
9.00x20	124	197	14.5	4.0	11.500
..	124	194	13.5	3.0	10.500
.. L.W.	124	194	12.5	3.0	10.000
..	124	186	13.0	3.5	10.000
..	123	180	13.0	3.0	9.300
8.25x16	104	172	13.5	3.5	8.000
7.50x16	99	158	12.5	3.5	6.500
..	99	150	11.5	3.0	5.400
..	99	140	12.0	3.0	5.200
7.8x15	87	158	12.5	3.5	5.700
..	87	150	11.5	3.0	4.800
7.00x15	93	140	12.0	3.0	4.900
6.00x16	90	130	10.0	3.0	4.000
..	90	120	10.0	3.0	3.700

XL



Name	Length inch	Base width mm	Tread depth mm	Base thickness	Approx. weight kgs
10.00x20	127	194	14.0	4.0	11.200
9.00x20	124	194	14.0	4.0	10.900
..	124	186	14.0	3.5	10.000

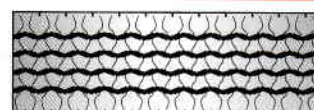
RADIAL

APOLLO



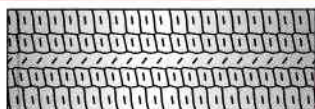
Name	Length inch	Base width mm	Tread depth mm	Base thickness	Approx. weight kgs
7.00x15	93	145	11.0	3.0	4.600

BCRDL



Name	Length inch	Base width mm	Tread depth mm	Base thickness	Approx. weight kgs
12.00x20/24	147	230	15.0	4.0	16.400
..	147	215	15.0	4.0	15.000
10.00x20 L.W.	127	212	10.0	3.0	8.800
9.00x20	124	190	11.0	3.5	8.600

ASTRO



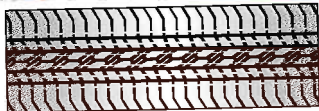
Name	Length inch	Base width mm	Tread depth mm	Base thickness	Approx. weight kgs
7.50x16	99	150	12.5	3.0	5.500
7.8x15	87	165	10.0	3.5	4.500
..	87	156	12.0	3.0	5.000
.. L.W.	87	156	9.5	2.5	4.100
Spacio	90	138	10.0	3.0	4.100
6.00x16	90	120	10.5	2.0	3.200
Car	87	176	12.0	3.0	5.700
..	82	138	10.0	3.0	3.700
..	66	125	11.0	2.5	2.800
..	66	120	10.5	2.0	2.300

CAR MR



Name	Length inch	Base width mm	Tread depth mm	Base thickness	Approx. weight kgs
Fiat	76	107	10.0	2.0	2.200
..	76	102	11.0	3.0	2.500
Maruti	66	107	10.0	2.0	2.000
..	66	102	11.0	3.0	2.200
4.50x10	60	102	11.0	3.0	2.000

EAGLE



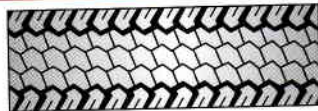
Name	Length inch	Base width mm	Tread depth mm	Base thickness	Approx. weight kgs
6.00x16	90	145	9.0	3.5	3.800
Fiat	76	135	9.0	3.0	3.000
Maruti	66	125	9.0	3.0	2.200

EH



Name	Length inch	Base width mm	Tread depth mm	Base thickness	Approx. weight kgs
10.00x20	127	210	16.0	3.5	12.000

GRIP-MASTER



Name	Length inch	Base width mm	Tread depth mm	Base thickness	Approx. weight kgs
12.00x20/24	147	240	14.0	3.5	14.900
10.00x20	127	205	14.0	4.0	11.300
9.00x20	124	190	14.0	4.0	10.000
7.50x16	99	158	13.0	3.5	6.100
"	99	148	13.0	3.5	5.600
6.00x16	90	124	12.0	3.6	3.900

GRIP TRACK



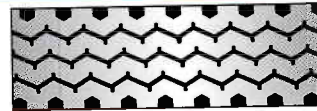
Name	Length inch	Base width mm	Tread depth mm	Base thickness	Approx. weight kgs
9.00x20 L.W.	124	184	11.0	2.5	7.600

KH



Name	Length inch	Base width mm	Tread depth mm	Base thickness	Approx. weight kgs
10.00x20	127	205	14.5	3.5	11.100

MAXIMUS Bias & Radial



Name	Length inch	Base width mm	Tread depth mm	Base thickness	Approx. weight kgs
12.00x20/24	147	265	16.0	4.0	18.300
"	147	260	14.0	4.0	16.500
"	147	250	16.0	4.0	17.000
"	147	240	16.0	4.0	16.400
"	147	235	16.0	4.0	15.300
"	147	230	16.0	4.0	16.500
"	147	225	16.0	4.0	15.300
"	147	220	16.0	4.0	14.900
"	147	215	15.0	3.5	13.800
"	147	210	15.0	3.5	13.500
" L.W.	147	235	14.0	3.5	14.000
" L.W.	147	230	14.0	3.5	13.900
" L.W.	147	225	14.0	3.5	13.500
" L.W.	147	220	14.0	3.5	13.000
11.00x20	136	220	16.0	4.0	13.800
"	136	215	15.0	3.5	12.800
10.00x20	127	215	15.0	3.5	12.000
" Super	127	210	16.5	3.5	12.800
"	127	210	15.0	3.5	11.700
"	127	205	13.5	3.5	10.100
9.00x20	124	194	13.5	3.5	10.000
"	124	187	13.5	3.5	9.600
7.50x16	99	160	11.0	3.5	5.600
"	99	150	11.0	3.0	5.000

MML



Name	Length inch	Base width mm	Tread depth mm	Base thickness	Approx. weight kgs
10.00x20	128	220	17.0	4.0	13.800
"	128	210	14.0	3.5	11.000

M-5



Name	Length inch	Base width mm	Tread depth mm	Base thickness	Approx. weight kgs
11.00 x 20	136	220	16.5	3.5	13.700
"	136	215	16.5	3.5	13.200
10.00 x 20	128	220	16.5	3.5	12.900
"	128	215	16.5	3.5	12.500

M 10



Name	Length inch	Base width mm	Tread depth mm	Base thickness	Approx. weight kgs
10.00x20	128	220	15.0	3.5	11.800
"	129	210	15.0	3.5	11.100

M 14



Name	Length inch	Base width mm	Tread depth mm	Base thickness	Approx. weight kgs
10.00x20	127	200	13.0	3.5	9.200
9.00x20	124	190	13.0	3.5	8.400
"	124	180	13.0	3.5	8.300
8.25x20	118	170	13.0	3.5	7.200
8.25x16	103	170	13.0	3.5	6.400

M-22



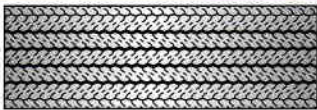
Name	Length inch	Base width mm	Tread depth mm	Base thickness	Approx. weight kgs
11.00 x 20	136	230	16.5	3.5	13.600
"	136	220	16.5	3.5	13.000
10.00 x 20	128	220	16.5	3.5	12.500
"	128	215	16.5	3.5	12.300
"	128	204	16.5	3.5	11.500

M-24



Name	Length inch	Base width mm	Tread depth mm	Base thickness	Approx. weight kgs
11.00 x 20	136	220	12.0	3.0	10.700
10.00 x 20	128	220	12.0	3.0	10.200
"	128	215	12.0	3.0	9.800
"	128	203	12.0	3.0	9.500

OPTIMA



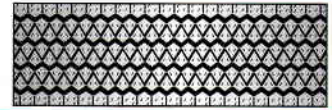
Name	Length inch	Base width mm	Tread depth mm	Base thickness	Approx. weight kgs
6.00x16	90	120	8.0	2.5	3.100
"	90	115	10.0	2.5	3.300
Ambassador	82	120	8.0	2.5	2.800
"	82	115	10.0	2.5	3.000
Fiat L.W.	76	104	8.0	2.5	2.000
"	76	95	8.0	2.5	1.900
Tata Ace	66	115	10.0	2.5	2.400
Maruti L.W.	66	104	8.0	2.5	1.900
"	66	95	8.0	2.5	1.700
Auto	50	85	9.0	2.5	1.200

PICKUP RADIAL



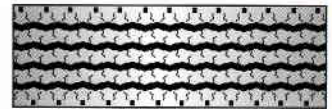
Name	Length inch	Base width mm	Tread depth mm	Base thickness	Approx. weight kgs
7.00x15	93	145	11.0	3.0	4.300

RADIAL



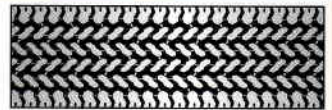
Name	Length inch	Base width mm	Tread depth mm	Base thickness	Approx. weight kgs
Tata Estate	87	174	12.0	3.0	5.000
Contessa	76	138	10.0	2.5	3.100
Ambassador	82	138	10.0	2.5	3.400
Maruti	66	128	10.0	2.5	2.500

R2 Bias & Radial



Name	Length inch	Base width mm	Tread depth mm	Base thickness	Approx. weight kgs
12.00x20/24	147	255	14.5	4.0	17.400
"	147	240	14.0	4.0	15.000
"	147	235	14.0	4.0	14.900
"	147	230	14.0	4.0	14.700
"	147	225	15.0	4.0	14.800
"	147	220	15.0	4.0	14.600
"	147	215	15.0	4.0	14.200
"	147	210	15.0	4.0	13.700
11.00x20	136	220	15.0	4.0	13.500
"	136	215	15.0	4.0	13.100
10.00x20	127	215	15.0	4.0	12.300
"	127	210	15.0	4.0	11.700
"	127	200	15.0	3.5	11.700
"	127	195	15.0	3.5	11.600
9.00x20	124	195	15.0	3.5	11.300
"	124	185	13.5	3.5	10.000
7.50x16	99	158	11.5	3.0	5.500
"	99	148	11.5	3.0	5.000

R3



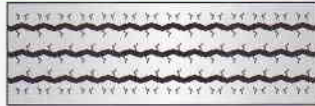
Name	Length inch	Base width mm	Tread depth mm	Base thickness	Approx. weight kgs
Car	87	170	9.0	2.5	3.700
"	93	140	9.0	2.5	3.400

R 4



Name	Length inch	Base width mm	Tread depth mm	Base thickness	Approx. weight kgs
Car	93	185	10.0	3.0	5.300
"	240	165	10.0	2.5	11.000
"	90	145	10.0	3.0	3.700

R 5



Name	Length inch	Base width mm	Tread depth mm	Base thickness	Approx. weight kgs
10.00x20	128	215	13.0	3.0	11.900

GRML



Name	Length inch	Base width mm	Tread depth mm	Base thickness	Approx. weight kgs
Special application	152	320	20.0	4.0	24.500
	152	300	18.0	4.0	20.900
	152	290	18.0	4.0	20.500

Z-LUG Bias & Radial



Name	Length inch	Base width mm	Tread depth mm	Base thickness	Approx. weight kgs
12.00x20/24	147	250	14.5	3.5	15.700
"	147	240	16.0	4.0	16.600
"	147	235	14.0	3.5	13.800
"	147	230	14.0	3.5	13.700
"	147	225	16.0	4.0	15.200
"	147	220	16.0	4.0	15.000
"	147	215	16.0	4.0	14.800
"	147	210	16.0	4.0	14.500
11.00x20	136	235	14.0	3.5	12.800
"	136	225	16.0	4.0	14.000
"	136	220	16.0	4.0	13.900
"	136	215	16.0	4.0	13.700
10.00x20	127	215	16.0	4.0	12.800
"	127	210	16.0	4.0	12.200
"	127	205	14.0	3.0	10.700
9.00x20	124	195	15.0	4.0	11.400
7.50x16	99	160	13.0	3.0	6.100
6.00x16	90	124	12.0	3.0	3.800

JCB



Name	Length inch	Base width mm	Tread depth mm	Base thickness	Approx. weight kgs
14.00x25 (Coming soon)		315			